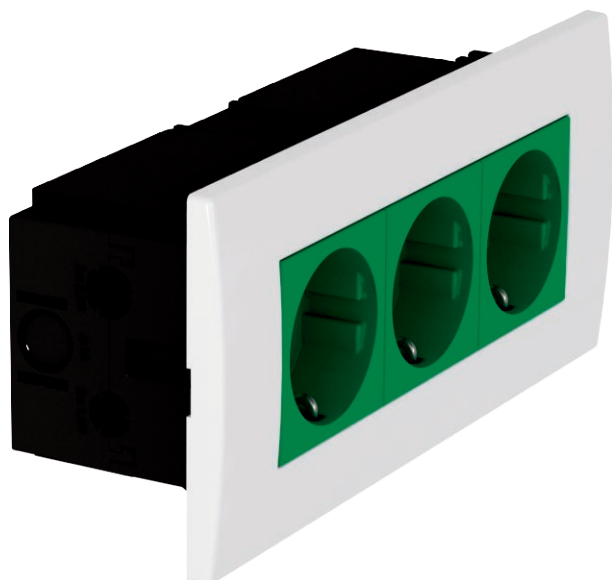


Technical data sheet

AR45 socket unit, triple

Item no. 6119415



Pre-terminated socket unit without labelling panel, suitable for installation in Rapid 80 device installation trunking systems.

Socket unit, consisting of:

- Service outlet, triple, type 71GD9-2
- Protective contact socket, triple, 0° connection direction, colour: see table
- Cover frame AR45, triple, without labelling panel, colour: pure white

PC Polycarbonate

Additional product text 2 | For installation in Rapid 80 device installation trunking and ISS service poles.

Master data

Item no.	6119415
Type	SDE-RW DOGN3
Description 1	Socket unit
Description 2	for triple Modul 45
Dimension	84x185x59mm
Colour	Mint green
RAL number	6029
Material	Polycarbonate
Material symbol	PC
Smallest sales unit (VG)	1,00 Piece
Weight	23,30 kg/100 pc.

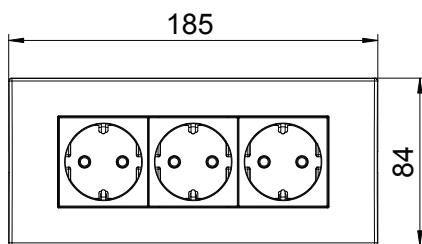
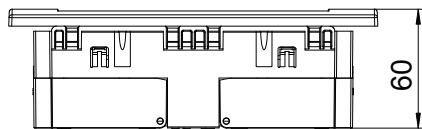
Technical data sheet

AR45 socket unit, triple

Item no. 6119415



Technical data



Width	185,00 mm
Height	84,00 mm
Depth	60,00 mm
Cover	Complete housing
Closable	<input type="checkbox"/>
Connection type	Screwless terminal
Printed label/coding	Without printing
Version	Triple 0°
Surface version	Matt
Sockets/switch version	SCHUKO
Version for	SCHUKO
Number of poles	2,00
Number of units	3,00
Number of modules (for modular construction)	0,00
Number of switchable sockets	0,00
Ejection mechanism	<input type="checkbox"/>
Fastening type	Lock
Labelling panel	<input type="checkbox"/>
Error current protection	<input type="checkbox"/>
For more difficult conditions (according to VDE)	<input type="checkbox"/>
Power reserve	<input type="checkbox"/>
Halogen-free	<input checked="" type="checkbox"/>
Insulated installation	<input type="checkbox"/>
Increased touch protection	<input checked="" type="checkbox"/>
Hinged cover	<input type="checkbox"/>
Warning light	<input type="checkbox"/>
With on/off switch	<input type="checkbox"/>
With fine-wire fuse	<input type="checkbox"/>
With functional lighting	<input type="checkbox"/>
With orientation lighting	<input type="checkbox"/>
Mounting type	Device installation duct
Nominal voltage	250,00 V
Nominal current	16,00 A
Protection rating	Other
Special power supply	Without special power supply
Socket version	Schutzkontakt
Socket angle	0°
Transparent	<input type="checkbox"/>
Surge protection	<input type="checkbox"/>
Rotated central insert	<input type="checkbox"/>